

Emergency Oxygen Inlet Box (Recessed)



Features

The EOI-series Tri-Tech Medical Emergency Inlet Box provides an inlet for connection a temporary auxiliary source of oxygen to the oxygen pipeline system for emergency or maintenance situations as recommended by NFPA 99.

- Made in the U.S.A.
- Designed in accordance with NFPA 99.
- Rugged powder coated steel NEMA 4 weather-tight enclosure with padlock staples to prevent tampering or unauthorized access
- 1"NPTF oxygen inlet - supports high flow requirements (other sizes available upon request)
- Entire assembly is cleaned for oxygen service and capped.
- Available with back outlet connection only
- Includes a 75 psig safety relief valve.
- Includes a 1" check valve brazed into box

Specifications

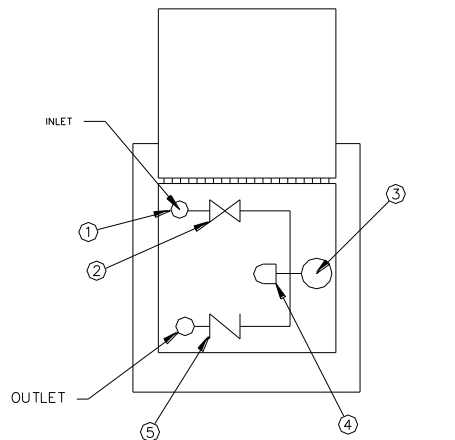
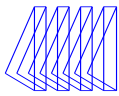
The Emergency Oxygen Inlet Box shall be Tri-Tech Medical Emergency Oxygen Inlet Box. The Emergency Inlet Box shall provide an inlet for connection a temporary auxiliary source of oxygen to the oxygen pipeline system for emergency or

maintenance situations as recommended by NFPA 99.

The Emergency Inlet Box shall consist of a ball valve, pressure gauge and a NPTF (plugged) connection housed in a tamper resistant, weather tight, maintenance free, powder coated steel enclosure. The enclosure shall be labeled "Emergency Low Pressure Gaseous Oxygen Inlet," and include a padlock staple to prevent tampering or unauthorized access. The Emergency Inlet Box should be connected at a point downstream of the main supply line shutoff valve.

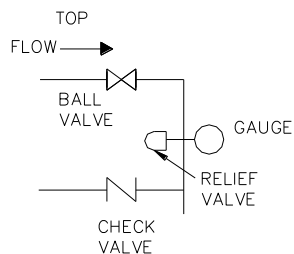
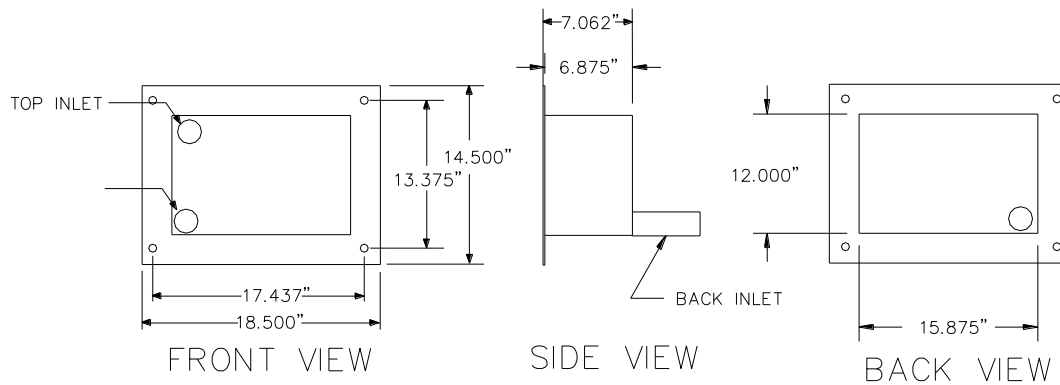
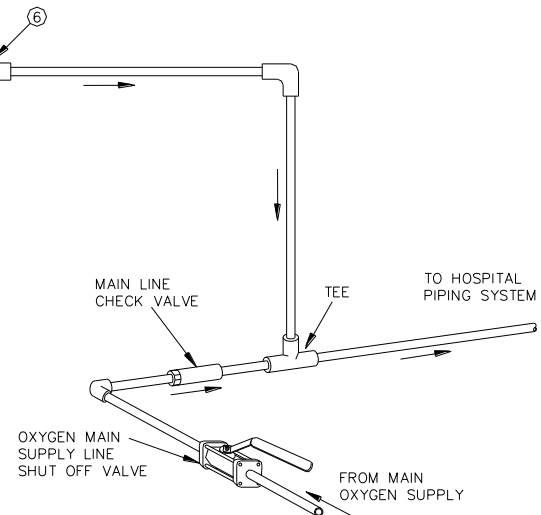
A fast acting check valve shall be included in the Emergency Inlet Box as recommended by NFPA 99. The check valve shall have a cast bronze body and straight - through design for minimum pressure drop.

A 75 psig relief valve shall be included in the Emergency Inlet Box as recommended by NFPA 99. The relief valve shall have a brass body, single seat design, and be cleaned for oxygen. The relief valve automatically opens to 'relieve' or vent pressures greater than 75 psig to atmosphere and will automatically reseal to provide a bubble tight seal after the pressure drops below 75 psig.



- 1) SUPPLY CONNECTION
- 2) SHUT OFF VALVE
- 3) 0-100 PSI GAUGE
- 4) PRESET PRESSURE RELIEF VALVE (75 PSI)
- 5) EMERGENCY LINE CHECK VALVE
- 6) EMERGENCY LINE OUTLET

REFERENCE: NFPA 99C
"EMERGENCY OXYGEN
SUPPLY CONNECTION"



PIPING SCHEMATIC

Ordering Information

Part #	Description
EOIR-100-Back	1" Emergency Oxygen Inlet Box with back outlet connection, with internal 1" check valve, ball valve, gauge and 3/4" 75 psi relief valve in a lockable weather tight enclosure